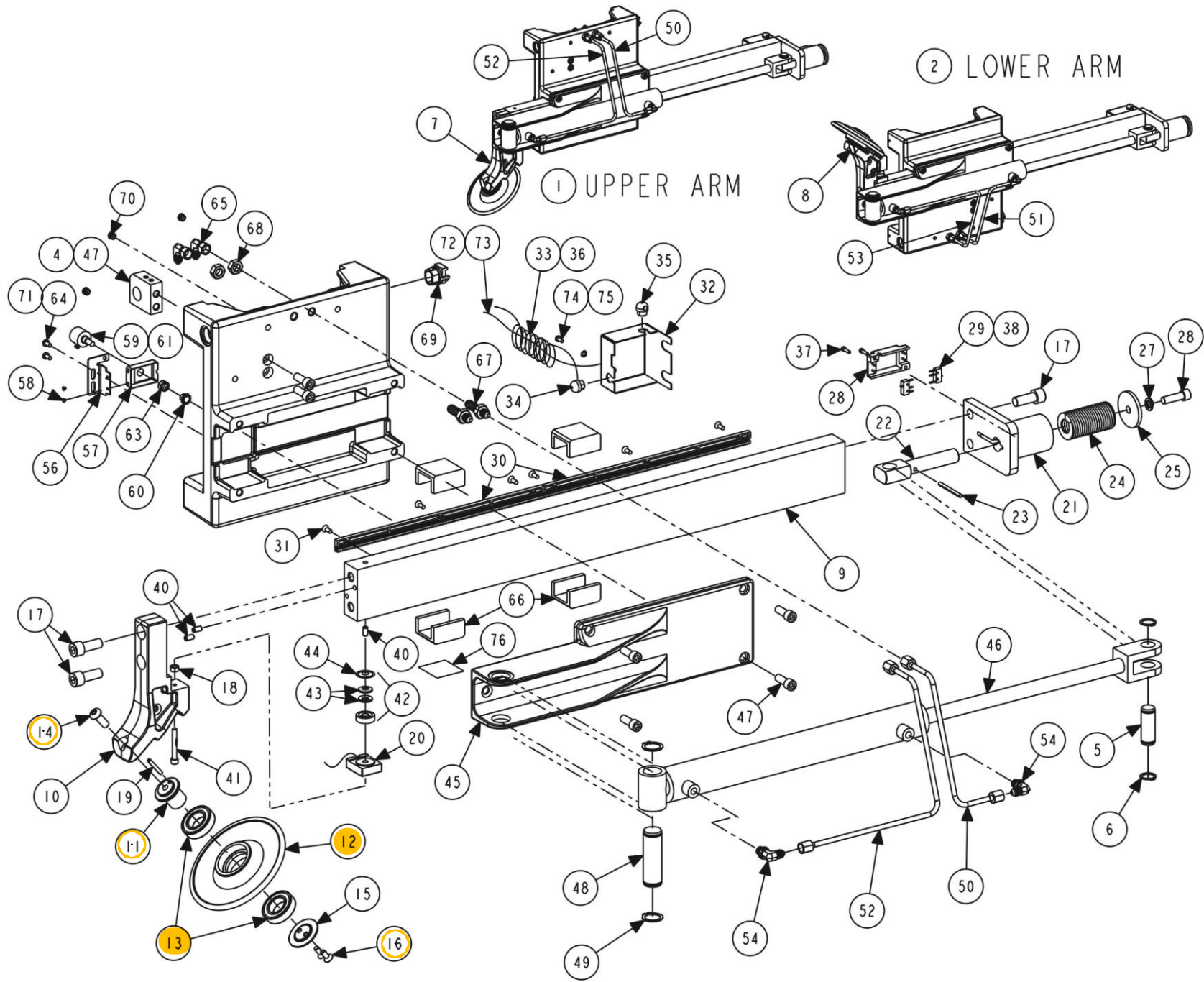


UPPER AND LOWER BEAD BREAKER ARMS
REFER TO NEXT SHEET FOR PARTS DESCRIPTION LISTING



PARTS DESCRIPTION LISTING

Index No.	Part Number	Description	Qty.
1	103-216-1	ARM ASSEMBLY - UPPER BB (Shown assembled and explodes)	1
2	103-217-1	ARM ASSEMBLY - LOWER BB (Not shown exploded)	1
3	56-73-2	CARRIER - CARRIAGE MACH	1
4	11-1432-2	SUPPORT - CYLINDER MOUNT EYE	1
5	135-505-2	PIN - CLEVIS 3/4 X 1.688 INCH	1
6	112-63-2	SNAP RING - TRUARC #5100-75	2
7	103-229-1	ARM ASSEMBLY - UPPER SUBASSEMBLY (Unique to upper arm)	1
8	103-230-1	ARM ASSEMBLY - LOWER SUBASSEMBLY (Unique to lower arm)	1
9	114-98-2	SLIDE - BEAD ROLLER	1
10	14-1602-2*	END - EFFECTOR BRACKET	1
11	97-623-2	SHAFT - BEAD BREAKER END EFFECTOR AXLE	1
12	111-154-1	ROLLER ASSEMBLY- BEAD (Includes:)	1
13	130-212-2	BEARING - 6005	2
14	74-517-3	SOCKET BUTTON HEAD CAP SCREW 3/8-16 X 1.0 IN (FULL-THREAD)	1
15	41-207-2	RETAINER - BEAD BREAKER ROLLER	1
16	75-385-3	FLAT HEAD SOCKET CAP SCREW 1/4-20 X .63 INCH	2
17	74-471-3	SOCKET HEAD CAP SCREW 1/2-13X1.25 INCH	4
18	76-368-2*	NUT LOCK 1/4-20 NYLON INSERT	1
19	135-141-2	PIN - ROLL 3/16 X 1 1/4 INCH	1
20	125-487-1	SENSOR, PIEZO FIELD SERVICE	1
21	14-1351-1-005	BRACKET - COMPLIANCE SWITCH	1
22	63-280-2	ROD - EYE- BEAD BREAKER	1
23	135-517-2	PIN - SPLIT 3/16-2	1
24	98-454-2	SPRING - DIE 1.5 OD .75 RD 3.5 INCH LONG	1
25	77-379-2	WASHER - BEAD BREAKER SPRING RETAINER	1
26	74-160-2	SOCKET HEAD CAP SCREW 3/8-16 X 1.25 INCH (FULL-THREAD)	1
27	77-216-2	WASHER - LOCK HI-COLLAR 3/8 INCH	1
28	105-626-2	HOUSING - LIMIT-SWITCH 1	1
29	18-350-2	SWITCH - HANGER	2
30	99-145-2	RACK - POSITION SENSOR 24 PITCH	2
31	75-566-2	SCREW - SELF-TAPPING 10-32 X .50 INCH	6
32	67-731-1	BOX - JUNCTION TIRE CHANGER COMPLIANCE	1
33	38-1175-3	CABLE ASSEMBLY - ARM INLINE COILED	1
34	59-35-2	STRAIN RELIEF - RA HEYCO 1374	1
35	59-65-2	STRAIN RELIEF - HEYCO #1361	1
36	37-685-1*	WIRE ASSEMBLY-PIEZO CURRENT LIMIT	1
37	75-116-2	SOCKET HEAD CAP SCREW 6-32 X .50 INCH (FULL-THREAD)	2
38	37-636-1	WIRE ASSEMBLY - COMPLIANCE SWITCHES	1
39	Field Purchase	ADHESIVE - LOCTITE 242	A/R
40	135-163-2	PIN - DOWEL 1/4 X 1/2 INCH LONG STEEL	3
41	75-836-3*	SOCKET HEAD CAP SCREW 1/4 - 20 SPECIAL	2
42	98-511-1*	SPRING ASSEMBLY - BELLEVILLE (Includes:)	1
43	98-511-1	SPRING - BELLEVILLE .375 INCH ID	2
44	162-184-2	TAPE-1 INCH DIAMETER DISC	1

* Noted items are contained within Piezo Field Service Kit 20-3014-1. Kit is used to retro fit current Piezo design. See following table for items 45 through 76.

