

# COATS®

## **Robo-Arm® Cylinder Seal**

### **Kit 85609732**

For use with COATS Model Tire Changer

## **User Instructions with Parts Identification**

READ these instructions before placing unit in service. KEEP these and other materials delivered with the unit in a binder near the machine for ease of reference by supervisors and operators.

**HENNESSY INDUSTRIES, INC.**

1601 J. P. Hennessy Drive, La Vergne, TN, USA 37096 | 615-641-7533 | 800-689-6359 | [www.ammcoats.com](http://www.ammcoats.com)  
HENNESSY INDUSTRIES INC. Manufacturer of AMMCO®, COATS® and BADA® Automotive Service Equipment and Tools

Manual Part No. 85609732 00  
Revision 03/14

## **WARNING**

Before making any inspection, adjustment, or repair, disconnect the power source and block out all moving parts to prevent injury.

## **WARNING**

Keep the machine and the immediate work area clean. Do not use compressed air to remove dirt and debris from the machine. Foreign material may be propelled into the air and into operator or bystander causing personal injury.

## **WARNING**

Wear protective clothing, equipment, and eye protection, when making any adjustments or repairs to the machine.

## Instructions

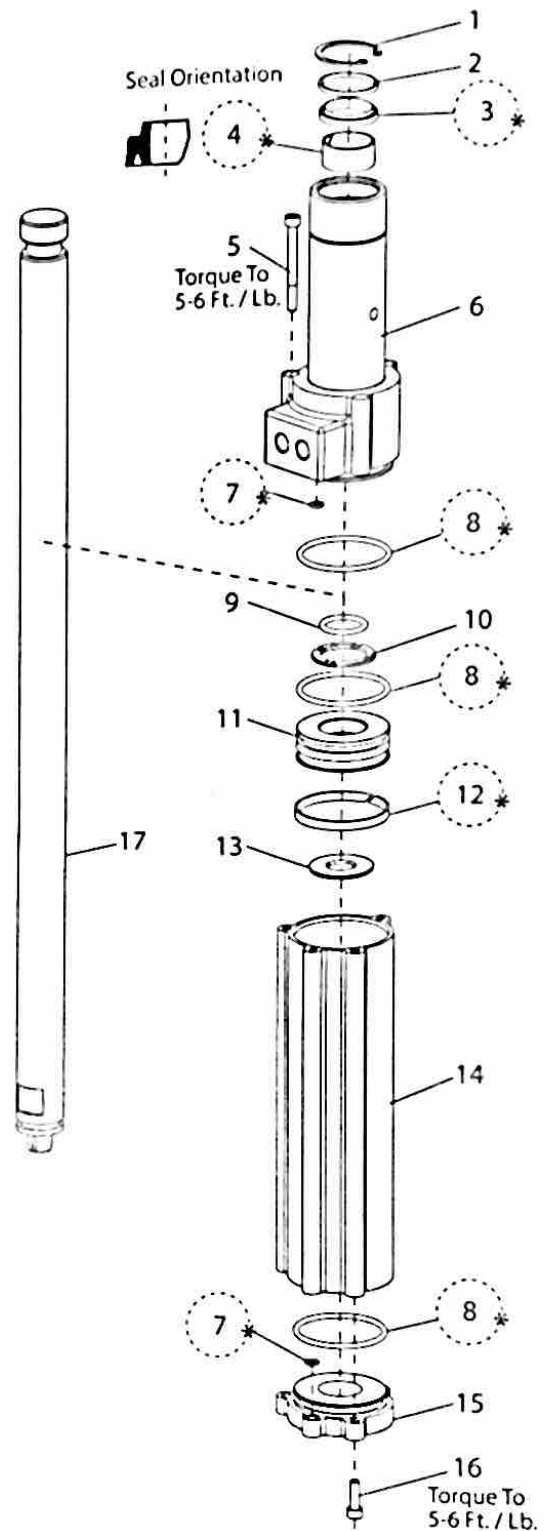
1. Disconnect the tire changer electric power supply (E models).
2. Disconnect the air supply to the tire changer and wait for the air pressure to deplete. Then, disconnect the air lines to the Robo-Arm™ cylinder fittings.
3. Take out the roll-pin to remove the plastic foot hold-down. Be sure to capture and save the ball bearing inside the top of the foot.
4. Remove the snap-ring at the bottom of the cylinder; loosen the set screw and then lift the cylinder out of the short arm.
5. Disassemble the top and bottom caps from the cylinder by removing the (3) screws on each cap.
6. Slide the piston and rod assembly out of the cylinder sleeve.
7. Clean and inspect the rod and the cylinder for imperfections. If either the rod or cylinder is damaged, replace the entire assembly before continuing.
8. Remove snap ring, spacer, wiper seal, and sleeve bearing from the cylinder bottom cap. From the opposite end of the cap, remove the 2 o-ring seals.
9. Lubricate the seat, new seal, and new wiper with the lubricant supplied in the kit.
10. Install the sleeve bearing, seal with cup facing in, spacer, and retaining ring.
11. Install the large and small o-rings on the opposite end of the bottom cap.
12. Remove the 2 o-ring seals from the top cap.
13. Clean the top cap.
14. Lubricate the seat and the new o-rings. Install into top cap.
15. Remove the o-ring and nylon sleeve from the piston.
16. Clean the piston.
17. Lubricate the seats and install the new o-ring.
18. Clean the inside of the cylinder sleeve and nylon sleeve.
19. Carefully slide the piston and rod assembly into the sleeve.
20. Carefully attach the cylinder caps to the cylinder sleeve.
21. Apply INSTAbond® 124 or LOCTITE® Threadlocker Blue 242® to the 6 screws and tighten to 5-6 ft. lbs.
22. Re-install cylinder to tire changer and check for proper functioning.



\*INSTAbond® is a registered trademark of ACCRAbond, Inc.

\*\*Loctite® Threadlocker Blue 242® are registered trademarks of Henkel Corp

## Parts Identification

Item	Part No.	Description
1		Snap Ring
2		Spacer
3	85608419	1.25-inch Wiper Seal
4	85608396	1.25 x 0.625 Nyliner Sleeve
5		M6-1 x 60mm SHCS Screw
6		2.5-inch Cylinder Bottom Cap
7	85608141	6mm (2-010) Seal O-ring
8	85608142	56mm Seal O-ring
9		32mm O-ring
10		Robo-Arm Cushion
11		2.5-inch Piston O-ring
12	85608148	63mm Nyliner Sleeve
13		Robo-Arm Cushion
14		2.5-inch Cylinder Sleeve
15		2.5-inch Cylinder Top Cap
16		M6-1 x 20mm SHCS Screw
17		Piston Shaft, 32mm



 Kit Components  
 Apply Grease To These Locations